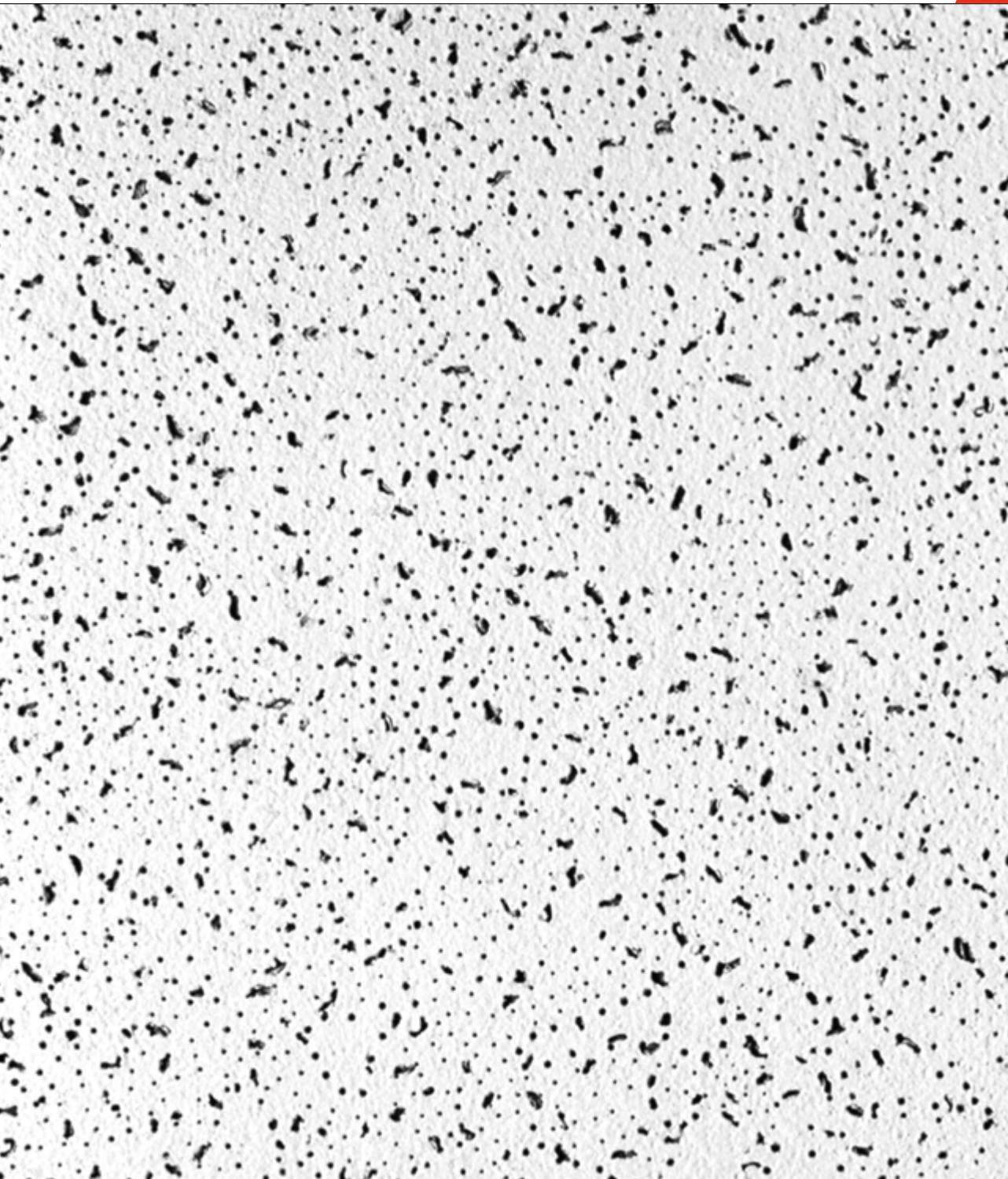


# OWA deco®

Surface Pattern:

## Comet

12 mm Lay-in  
Ceilings Panels  
For Exposed  
Grid Systems



## Economy plus



# OWA

Odenwald  
Faserplattenwerk GmbH  
Dr.-F.-A.-Freundt-Straße 3  
D-63916 Amorbach  
Tel.: +49 (0) 93 73 / 2 01-0  
Fax: +49 (0) 93 73 / 2 01-1 30  
www.owa.de · E-Mail: info@owa.de

OWA  
deco®

# Comet

**Comet** – non directional fissured surface pattern combining positive visual appearance with excellent acoustic quality.

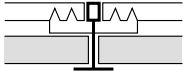
**Composition:**

Non combustible mineral wool with fillers and binders.

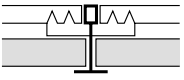
**Grid System:**

Exposed Grid Systems S3 and S15

S3



S15

**Edge Detail:**

Square Cut (E3).

**Sizes:**

600 x 600 mm (nom).

1200 x 600 mm (nom).

**Thickness:**

12 mm (nom).

**Weight:**

Approx 2.5 kgs/M2. (Add 1.5 kgs/M2 for Exposed Grid System).

**Surface Pattern:**

Non-directional fissured with background needling.

**Colours:**

White – Light reflection 80%.

**Fire Class:**

Class 1 Surface Spread of flame, face and back to BS.476: Part 7.  
Class 'O' as defined in Building Regs. 1991. Approved document 'B'.

**Acoustics:**

NRC – 0.65

**Installation**

Installation should be in accordance with the recommendations contained within BS 8290: 1991.

**Handling and storage**

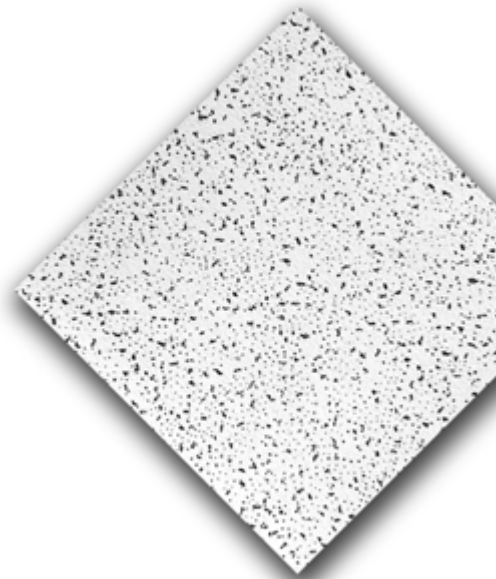
OWAdeco® ceiling panels should be stored flat in a clean, dry, stable environment. Cartons should not be rolled or dropped on corners.

**Health and Safety at Work Act**

A statement regarding OWA materials is available on request.

**Important note:**

Characteristics, properties of performance of materials described herein are based on the results of tests under controlled conditions. OWA makes no warranties express or implied, for the characteristics, properties or performance of these products under any variation from these conditions in actual use. OWA assumes no responsibility for the effects of structural movements.

**OWA**

Odenwald  
Faserplattenwerk GmbH  
Dr.-F.-A.-Freundt-Straße 3  
D-63916 Amorbach  
Tel.: +49 (0) 93 73 / 2 01-0  
Fax: +49 (0) 93 73 / 2 01-1 30  
www.owa.de · E-Mail: info@owa.de