

FRANCHISE METAL (CAVIT) ANCHOR

CEAMDR/4103



USAGE

Self drilling and plasterboard fixing.

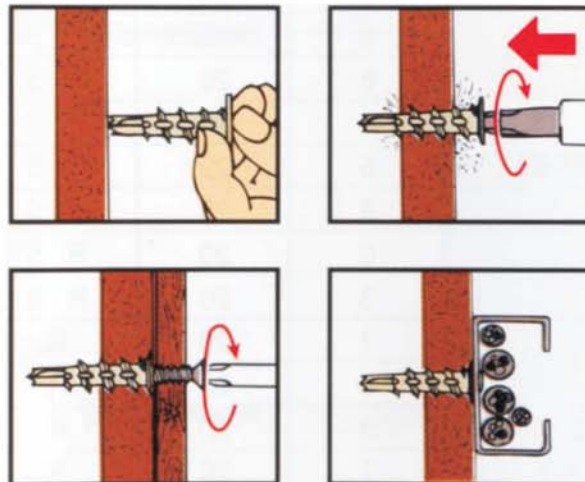
General purpose light duty fixings to plasterboard. Trunking, conduits, battens, tracks for partitions, pipework saddles, radiators, etc.

TECHNICAL FEATURES

Zinc alloy complete with 35mm screw. 10mm fixture thickness. Set independent of fixture (not a thru-fixing).

INSTALLATION

The base section of the fixing is inserted into the material. Then the fixture is offered up and the final part of the fixing is then screwed into place.



16



P&M
Fixings & Fasteners

Unit 6, Franchise Street, Wednesbury,
West Midlands WS10 9RG
Telephone: 0121-526 5775
Fax No.: 0121-568 6108
E-Mail: enquire@pmfixings.com
Website: <http://www.pmfixings.com>