

FRANCHISE COARSE THREAD DRYWALL SCREWS

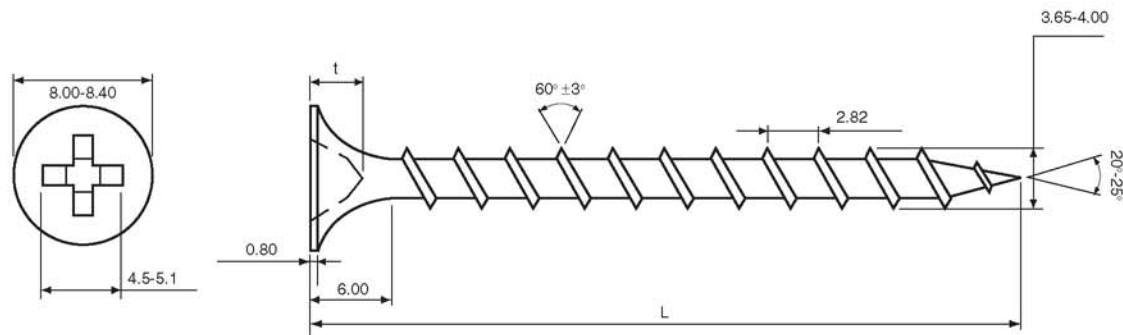
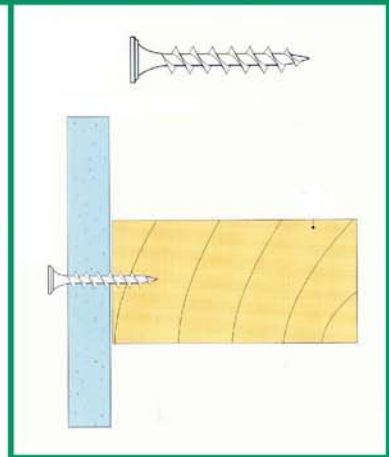
DWSCTD/4103

COARSE THREAD DRYWALL

- For attaching plasterboard to timber stud partitioning and ceiling joists
- Black finish
- 25 to 50mm x 3.5mm dia.
- 65 to 75mm x 4.2mm dia.

DRYWALL SCREWS #6 (M3.5) CS

t	2.60-3.10mm
Recess No	2
Material & Case Hardness	C1018 Steel, case depth 0.1mm
Surface Harden	550-800 HV 0.3
Breaking Torque	28Kg/cm
Material Din	2.65



L	1"	1-1/4"	1-1/2"	1-5/8"	1-3/4"	2"	2-1/4"	2-1/2"	3"	4"
L	25mm	32mm	38mm	41mm	44mm	51mm	57mm	64mm	76mm	102mm
Min	24.35	30.50	36.85	40.05	43.20	49.30	55.65	62.00	74.70	99.85
Max	26.45	33.00	39.35	42.55	45.70	52.30	58.65	65.00	77.70	103.35



P&M
Fixings & Fasteners

Unit 6, Franchise Street, Wednesbury,
West Midlands WS10 9RG
Telephone: 0121-526 5775
Fax No.: 0121-568 6108
E-Mail: enquire@pmfixings.com
Website: <http://www.pmfixings.com>